



FACT SHEET

# Automotive Logistics Center Bremen

**New site for innovative battery logistics and environmentally friendly plant supply by rail.**

DB Cargo Logistics, the logistics subsidiary of DB Cargo, has opened the Automotive Logistics Center (ALC) in Bremen. The center will be used to supply the adjacent Mercedes-Benz plant by rail and is specially designed to meet the requirements of battery logistics. The center enables a number of rail logistics services to be offered through its **rail transshipment facility, trailer yard and battery center.**



## Rail yard: direct access to the rail network

A growing number of automakers are focusing on e-mobility and expanding their range of climate-friendly electric cars. As a result, demand among production sites for batteries for electric vehicles has increased.



Photo: DB Cargo Logistics



Thanks to its new rail transshipment facility, which is located just a few hundred meters from the Mercedes-Benz plant, DB Cargo Logistics enables climate-friendly delivery of batteries and other vehicle components by rail. Two tracks and a wide unloading lane create flexibility for loading incoming trailers. A reach stacker lifts load units from freight cars, which are then transported by electrically powered tractors to the trailer yard, the battery center or directly to the plant.



### **Trailer yard: our launch pad for delivery to the assembly line**

Just-in-time and just-in-sequence set the pace in automotive logistics. The trailer yard serves as the Automotive Logistics Center's "fast" intermediate storage facility.



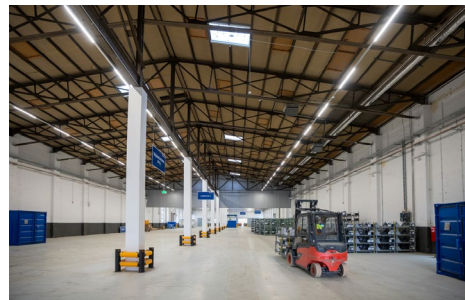
*Photo: DB Cargo Logistics*

With 50 parking spaces, it offers plenty of room for storing incoming trailers temporarily. Trailers filled with batteries and other vehicle components arrive at the ALC by rail and road. As soon as the components are needed at the plant, DB Cargo Logistics delivers them directly to the assembly line in the correct sequence using electric tractors.



### **Battery center: our working warehouse for storing and sequencing batteries**

Incoming batteries are sequenced, or pre-sorted, at the battery center. The heavy, sensitive components are loaded from triple racks for transport onto single racks for production with the help of a pneumatic splitting device and placed in the correct sequence for assembly.

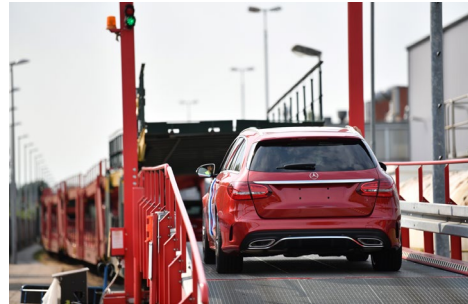


Around 240 modules can be processed each day. The 3,700 square meter center also has space to store up to 840 batteries for plug-in hybrids and 670 batteries for fully electric vehicles.



**Climate-friendly transport to the customer:  
car terminal for distributing finished vehicles**

DB Cargo Logistics's services don't stop at auto production. The ALC is located right next to the Auto Terminal Bremen (ATB). Built in 2014, the 70,000 square meter ATB is the central, multimodal distribution hub for the Mercedes-Benz plant in Bremen. Finished vehicles are inspected, transhipped and transported onward by rail or truck from the ATB.



*Photo: Oliver Lang*

The ATB can handle and transship up to 220,000 vehicles a year. DB Cargo Logistics drivers bring the new cars from the production facility to the auto terminal. In addition to storage and handling services, the terminal offers many other state-of-the-art services for vehicles: incoming vehicle inspection, cleaning, battery and tire pressure checks, and other service work.

**INFO BOX: AUTOMOTIVE RAILNET**

**The ALC and ATB are connected to a Europe-wide rail network**



*Photo: Oliver Lang*

DB Cargo Logistics's Automotive RailNet connects numerous automotive plants with each other and to major suppliers and customer locations. It serves as the basis of inbound and outbound logistics in Bremen. The network is used for time-sensitive inter-plant, supplier and spare parts transport as well as innovative finished vehicle transport throughout Europe and to Russia and China for all well-known automotive manufacturers. A growing number of plants for battery manufacturers and cell module suppliers are being built in Germany and other European countries and are increasingly being connected to this proven network. DB Cargo Logistics links these locations to the production plants of automakers across modes of transport.